

NOTES ON THE LIFE HISTORY OF *TAENARIS ARTEMIS* (SNELLEN VAN VOLLENHOVEN) (LEPIDOPTERA: NYMPHALIDAE) IN AUSTRALIA AND THE REDISCOVERY OF *T. A. QUEENSLANDICA* ROTHSCHILD

S.J. JOHNSON¹ and I.R. JOHNSON²

¹ P.O. Box 1085, Townsville, Qld, 4810

² 26 Brodie Street, Holland Park, Qld, 4121

Abstract

Descriptions are given of the mature larva and pupa of *Taenaris artemis jamesi* Butler from Torres Strait and a further specimen of *T. a. queenslandica* Rothschild is recorded from Cape York. The host plant is identified.

Introduction

Taenaris artemis is known with certainty to occur within Australian limits, as the subspecies *T. a. jamesi* Butler, on Darnley and Murray Islands in Torres Strait (Common and Waterhouse, 1981; Wood, 1987). A single male labelled North Queensland was described by Rothschild (1916) as *T. a. queenslandica*; however, no further specimens have been taken on mainland Australia and the record has been regarded as doubtful. The life history of *T. artemis* in Australia was previously unknown.

In April 1989 a single larva was taken on Murray Island and reared in Townsville and in June 1990 a specimen was taken flying in rainforest near Lockerbie, near the tip of Cape York Peninsula.

Notes

Taenaris artemis jamesi

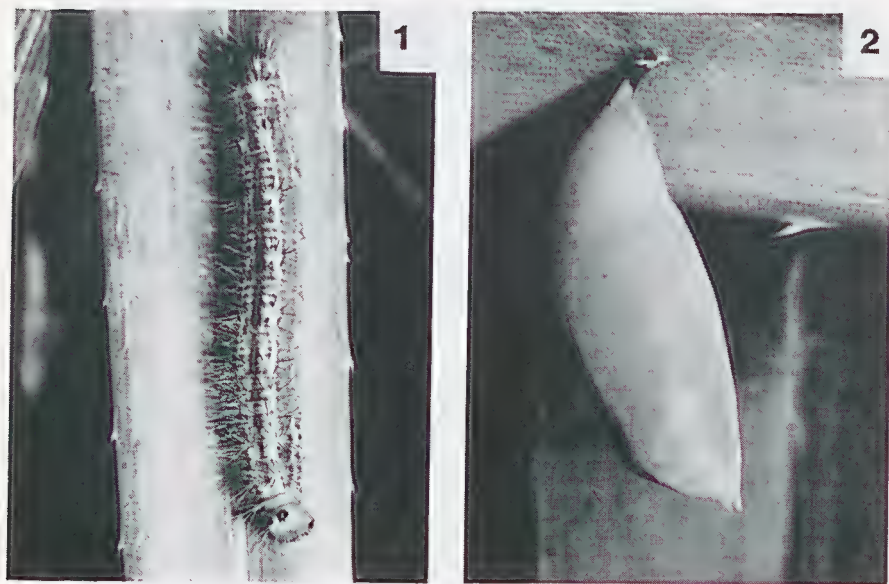
Food plant. *Pandanus* sp. (Pandanaeae).

Final instar larva (Fig. 1). Head orange, sparsely covered in long pale hairs and dorsally bearing a pair of stout black horns each tipped with a rosette of 5 pale spines surrounding a single central spine. Mandibles and genal patch overlying ocelli, black. Body pale orange, each segment with a raised central band densely covered in fine white secondary hairs and dorsolateral tufts of strong dark brown bristles. Dorsal line black on raised bands interrupted by paler areas at intersegmental regions. Dorsolateral lines white with irregular dark edging on posterior segments. Lateral stripes broad and pale yellow. Ventrolateral line orange edged black on thoracic segments. Anal plate rounded, orange and bearing numerous hairs. Length 55 mm and width 7.5 mm.

Pupa (Fig. 2). Smooth, pale green, with a pair of short anterior projections; abdominal spiracles pale whitish-yellow and basal cremaster black. Length 27 mm and width 12 mm. Pupal duration 12 days.

T. a. queenslandica

A single female was taken flying in rainforest 5 km north-east of



Figs 1 and 2. *Taenaris artemis jamesi*: (1) Mature larvae; (2) Pupa.

Lockerbie on 8 June 1990. The size of the ocelli and the extent of the grey areas on the wings are both within the variation in these characters present on specimens of *T. a. jamesi* taken by the authors on Murray Island. Although this supports the contention of Howarth (see Common and Waterhouse 1981) that *T. a. queenslandica* is a synonym of *T. a. jamesi*, any firm conclusion should await the collection of additional specimens from mainland Australia. Although a search of the area failed to locate further specimens it did reveal extensive *Pandanus* spp. swamps within the rainforest. This suggests that *T. artemis* is established in the area and that the previous record was valid. Collecting during the wetter months may be more likely to provide further specimens.

References

- COMMON, I.F.B. and WATERHOUSE, D.F. 1981. *Butterflies of Australia*. Pp. xiv + 682. Angus and Robertson, Sydney.
- ROTHSCHILD, W. 1916. Notes on Amathusiidae, Brassolidae, Morphidae, etc., with descriptions of new forms. *Novitates Zoologicae* **23**: 299-318.
- WOOD, G.A. 1987. The butterflies of Murray Island, Torres Strait, Queensland. *Australian Entomological Magazine* **14**: 39-42.